

GPIB

Getting Started with Your AT-GPIB/TNT and the GPIB Software for Windows NT

January 1998 Edition
Part Number 320648D-01

Internet Support

E-mail: support@natinst.com

FTP Site: <ftp.natinst.com>

Web Address: <http://www.natinst.com>

Bulletin Board Support

BBS United States: 512 794 5422

BBS United Kingdom: 01635 551422

BBS France: 01 48 65 15 59

Fax-on-Demand Support

512 418 1111

Telephone Support (USA)

Tel: 512 795 8248

Fax: 512 794 5678

International Offices

Australia 03 9879 5166, Austria 0662 45 79 90 0, Belgium 02 757 00 20, Brazil 011 288 3336,
Canada (Ontario) 905 785 0085, Canada (Québec) 514 694 8521, Denmark 45 76 26 00,
Finland 09 725 725 11, France 01 48 14 24 24, Germany 089 741 31 30, Hong Kong 2645 3186,
Israel 03 6120092, Italy 02 413091, Japan 03 5472 2970, Korea 02 596 7456, Mexico 5 520 2635,
Netherlands 0348 433466, Norway 32 84 84 00, Singapore 2265886, Spain 91 640 0085, Sweden 08 730 49 70,
Switzerland 056 200 51 51, Taiwan 02 377 1200, United Kingdom 01635 523545

National Instruments Corporate Headquarters

6504 Bridge Point Parkway Austin, Texas 78730-5039 USA Tel: 512 794 0100

Important Information

Warranty

The GPIB hardware is warranted against defects in materials and workmanship for a period of two years from the date of shipment, as evidenced by receipts or other documentation. National Instruments will, at its option, repair or replace equipment that proves to be defective during the warranty period. This warranty includes parts and labor.

The media on which you receive National Instruments software are warranted not to fail to execute programming instructions, due to defects in materials and workmanship, for a period of 90 days from date of shipment, as evidenced by receipts or other documentation. National Instruments will, at its option, repair or replace software media that do not execute programming instructions if National Instruments receives notice of such defects during the warranty period. National Instruments does not warrant that the operation of the software shall be uninterrupted or error free.

A Return Material Authorization (RMA) number must be obtained from the factory and clearly marked on the outside of the package before any equipment will be accepted for warranty work. National Instruments will pay the shipping costs of returning to the owner parts which are covered by warranty.

National Instruments believes that the information in this manual is accurate. The document has been carefully reviewed for technical accuracy. In the event that technical or typographical errors exist, National Instruments reserves the right to make changes to subsequent editions of this document without prior notice to holders of this edition. The reader should consult National Instruments if errors are suspected. In no event shall National Instruments be liable for any damages arising out of or related to this document or the information contained in it.

EXCEPT AS SPECIFIED HEREIN, NATIONAL INSTRUMENTS MAKES NO WARRANTIES, EXPRESS OR IMPLIED, AND SPECIFICALLY DISCLAIMS ANY WARRANTY OF MERCHANTABILITY OR FITNESS FOR A PARTICULAR PURPOSE. CUSTOMER'S RIGHT TO RECOVER DAMAGES CAUSED BY FAULT OR NEGLIGENCE ON THE PART OF NATIONAL INSTRUMENTS SHALL BE LIMITED TO THE AMOUNT THEREOF PAID BY THE CUSTOMER. NATIONAL INSTRUMENTS WILL NOT BE LIABLE FOR DAMAGES RESULTING FROM LOSS OF DATA, PROFITS, USE OF PRODUCTS, OR INCIDENTAL OR CONSEQUENTIAL DAMAGES, EVEN IF ADVISED OF THE POSSIBILITY THEREOF. This limitation of the liability of National Instruments will apply regardless of the form of action, whether in contract or tort, including negligence. Any action against National Instruments must be brought within one year after the cause of action accrues. National Instruments shall not be liable for any delay in performance due to causes beyond its reasonable control. The warranty provided herein does not cover damages, defects, malfunctions, or service failures caused by owner's failure to follow the National Instruments installation, operation, or maintenance instructions; owner's modification of the product; owner's abuse, misuse, or negligent acts; and power failure or surges, fire, flood, accident, actions of third parties, or other events outside reasonable control.

Copyright

Under the copyright laws, this publication may not be reproduced or transmitted in any form, electronic or mechanical, including photocopying, recording, storing in an information retrieval system, or translating, in whole or in part, without the prior written consent of National Instruments Corporation.

Trademarks

CVI™, HS488™, LabVIEW™, NAT4882™, natinst.com™, NI-488™, NI-488.2™, NI-488.2M™, TNT4882™C, and Turbo488™ are trademark of National Instruments Corporation.

Product and company names listed are trademarks or trade names of their respective companies.

WARNING REGARDING MEDICAL AND CLINICAL USE OF NATIONAL INSTRUMENTS PRODUCTS

National Instruments products are not designed with components and testing intended to ensure a level of reliability suitable for use in treatment and diagnosis of humans. Applications of National Instruments products involving medical or clinical treatment can create a potential for accidental injury caused by product failure, or by errors on the part of the user or application designer. Any use or application of National Instruments products for or involving medical or clinical treatment must be performed by properly trained and qualified medical personnel, and all traditional medical safeguards, equipment, and procedures that are appropriate in the particular situation to prevent serious injury or death should always continue to be used when National Instruments products are being used. National Instruments products are NOT intended to be a substitute for any form of established process, procedure, or equipment used to monitor or safeguard human health and safety in medical or clinical treatment.

FCC/DOC Radio Frequency Interference Class B Compliance

This equipment generates and uses radio frequency energy and, if not installed and used in strict accordance with the instructions in this manual, may cause interference to radio and television reception. Classification requirements are the same for the Federal Communications Commission (FCC) and the Canadian Department of Communications (DOC). This equipment has been tested and found to comply with the following two regulatory agencies:

Federal Communications Commission

This equipment has been tested and found to comply with the limits for a Class B digital device, pursuant to part 15 of the FCC Rules. These limits are designed to provide reasonable protection against harmful interference in a residential installation. This equipment generates, uses and can radiate radio frequency energy and, if not installed and used in accordance with the instructions, may cause harmful interference to radio communications. However, there is no guarantee that interference will not occur in a particular installation. If this equipment does cause harmful interference to radio or television reception, which can be determined by turning the equipment off and on, the user is encouraged to try to correct the interference by one or more of the following measures:

- Reorient or relocate the receiving antenna.
- Increase the separation between the equipment and receiver.
- Connect the equipment into an outlet on a circuit different from that to which the receiver is connected.
- Consult the dealer or an experienced radio/TV technician for help.

Notices to User: *Changes or modifications not expressly approved by National Instruments could void the user's authority to operate the equipment under the FCC Rules.*

This device complies with the FCC rules only if used with shielded interface cables of suitable quality and construction. National Instruments used such cables to test this device and provides them for sale to the user. The use of inferior or nonshielded interface cables could void the user's authority to operate the equipment under the FCC rules.

If necessary, consult National Instruments or an experienced radio/television technician for additional suggestions. The following booklet prepared by the FCC may also be helpful: *Interference to Home Electronic Entertainment Equipment Handbook*. This booklet is available from the U.S. Government Printing Office, Washington, DC 20402.

Canadian Department of Communications

This Class B digital apparatus meets all requirements of the Canadian Interference-Causing Equipment Regulations.

Cet appareil numérique de la classe B respecte toutes les exigences du Règlement sur le matériel brouilleur du Canada.

About This Manual

| | |
|---------------------------------------|-----|
| How to Use the Manual Set | ix |
| Organization of This Manual | x |
| Conventions Used in This Manual | xi |
| Related Documentation | xii |
| Customer Communication | xii |

Chapter 1

Introduction

| | |
|-------------------------------------|-----|
| How to Use This Manual | 1-1 |
| What You Need to Get Started | 1-2 |
| Optional Equipment | 1-2 |
| GPIB Hardware Overview | 1-2 |
| GPIB Software Overview | 1-3 |
| Time-Saving Development Tools | 1-4 |

Chapter 2

Hardware Configuration and Installation

| | |
|---|------|
| Using the Hardware Default Settings | 2-1 |
| Note to EISA Users | 2-2 |
| Install the Hardware | 2-2 |
| Configure the Hardware (Optional) | 2-4 |
| Selecting the Base I/O Address | 2-6 |
| Selecting the Interrupt Request Line | 2-10 |
| Selecting the DMA Channel | 2-11 |
| Using Programmed I/O for GPIB Transfers | 2-13 |
| Setting the Shield Ground Configuration | 2-13 |

Chapter 3

Software Installation and Configuration

| | |
|------------------------------|-----|
| Install the Software | 3-1 |
| Configure the Software | 3-2 |

Chapter 4 Verify the Installation

Chapter 5 Begin to Use the GPIB Software

| | |
|---|-----|
| Getting Started with LabVIEW | 5-1 |
| Getting Started with LabWindows/CVI | 5-1 |
| Introduction to the Win32 Interactive Control Utility | 5-2 |
| Introduction to the NI Spy Utility | 5-3 |
| Running Existing GPIB Applications | 5-3 |
| General Programming Considerations | 5-4 |

Appendix A Uninstalling the Hardware and Software

Appendix B Troubleshooting and Common Questions

Appendix C Specifications

Appendix D Customer Communication

Glossary

Figures

| | |
|---|------|
| Figure 2-1. Installing the GPIB Board..... | 2-3 |
| Figure 2-2. AT-GPIB/TNT Parts Locator Diagram | 2-5 |
| Figure 2-3. AT-GPIB Parts Locator Diagram | 2-6 |
| Figure 2-4. Base I/O Address Switch Settings | 2-9 |
| Figure 2-5. Interrupt Jumper Setting for IRQ11 (Default Setting)..... | 2-10 |
| Figure 2-6. Interrupt Jumper Setting for IRQ5 | 2-11 |
| Figure 2-7. DMA Channel Jumper Setting for DMA Channel 7 | 2-12 |
| Figure 2-8. DMA Jumper Setting for No DMA Channel | 2-13 |
| Figure 2-9. Ground Configuration Jumper Settings | 2-14 |
| | |
| Figure 3-1. GPIB Software for Windows NT Setup Dialog Box | 3-2 |

| | | |
|-------------|--|-----|
| Figure 3-2. | AT-GPIB/TNT Configuration Dialog Box | 3-3 |
| Figure 4-1. | Diagnostic Utility after Testing | 4-1 |
| Figure A-1. | Board Type Dialog Box | A-1 |
| Figure A-2. | Add/Remove Programs Properties Dialog Box..... | A-2 |
| Figure A-3. | Removed Shared Component Dialog Box | A-3 |

Tables

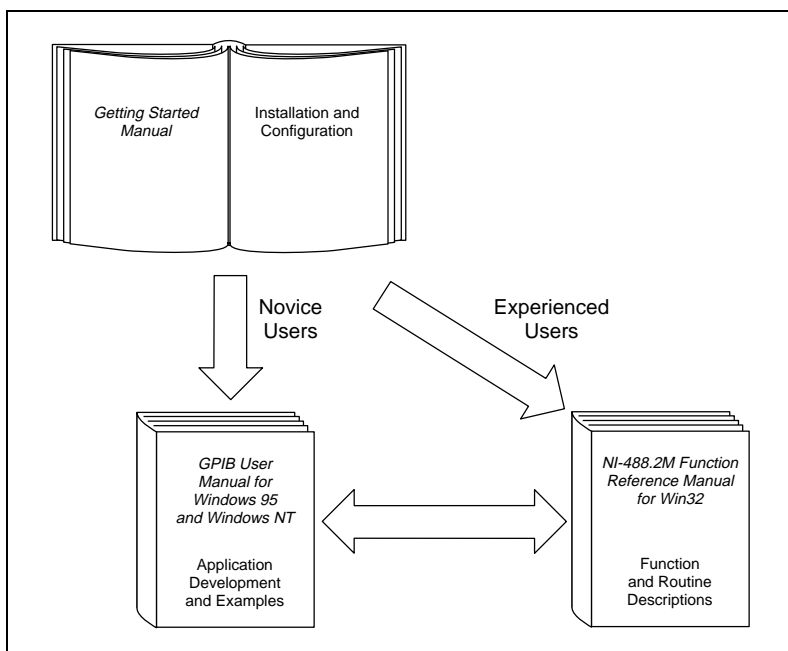
| | | |
|------------|--|------|
| Table 2-1. | Hardware Default Settings | 2-1 |
| Table 2-2. | Possible Base I/O Address Switch Settings | 2-7 |
| Table 2-3. | DMA Channels..... | 2-12 |
| Table C-1. | Hardware Characteristics for the AT-GPIB/TNT | C-1 |
| Table C-2. | Hardware Characteristics for the AT-GPIB | C-2 |
| Table C-3. | GPIB Software Transfer Rates for the AT-GPIB/TNT and AT-GPIB ... | C-2 |

About This Manual

This manual contains instructions for installing and configuring the National Instruments AT-GPIB/TNT or AT-GPIB interface board and the GPIB software for Windows NT. The GPIB software is intended for use with Windows NT version 4.0 or higher.

This manual assumes that you are already familiar with Windows NT.

How to Use the Manual Set



Use this getting started manual to install and configure your AT-GPIB/TNT or AT-GPIB and the GPIB software for Windows NT.

Use the *GPIB User Manual for Windows 95 and Windows NT* to learn the basics of GPIB and how to develop an application program. This manual also contains application examples and troubleshooting information.

The *NI-488.2M Function Reference Manual for Win32* contains specific NI-488 function and NI-488.2 routine information, such as format, parameters, and possible errors.



Organization of This Manual

The *Getting Started with Your AT-GPIB/TNT and the GPIB Software for Windows NT* manual is organized as follows:

- Chapter 1, *Introduction*, explains how to use this manual, lists what you need to get started, and briefly describes the AT-GPIB/TNT and AT-GPIB boards and the GPIB software.
- Chapter 2, *Hardware Configuration and Installation*, describes how to configure and install your AT-GPIB/TNT or AT-GPIB board.
- Chapter 3, *Software Installation and Configuration*, describes how to install and configure the GPIB software for Windows NT.
- Chapter 4, *Verify the Installation*, describes how to verify the hardware and software installation.
- Chapter 5, *Begin to Use the GPIB Software*, helps you get started with the GPIB software for Windows NT.
- Appendix A, *Uninstalling the Hardware and Software*, describes how to uninstall your AT-GPIB/TNT and the GPIB software from Windows NT.
- Appendix B, *Troubleshooting and Common Questions*, describes how to troubleshoot problems and answers some common questions.
- Appendix C, *Specifications*, describes the electrical, physical, and environmental characteristics of the AT-GPIB/TNT and AT-GPIB and the recommended operating conditions.
- Appendix D, *Customer Communication*, contains forms you can use to request help from National Instruments or to comment on our products and manuals.
- The *Glossary* contains an alphabetical list and description of terms that appear in this manual, including abbreviations, acronyms, metric prefixes, mnemonics, and symbols.

Conventions Used in This Manual

The following conventions appear in this manual:

| | |
|---|---|
| » | The » symbol leads you through nested menu items and dialog box options to a final action. The sequence File»Page Setup»Options»Substitute Fonts directs you to pull down the File menu, select the Page Setup item, select Options , and finally select the Substitute Fonts options from the last dialog box. |
|  | This icon to the left of bold italicized text denotes a note, which alerts you to important information. |
|  | This icon to the left of bold italicized text denotes a caution, which advises you of precautions to take to avoid injury, data loss, or a system crash. |
| AT-GPIB/TNT | AT-GPIB/TNT refers to a National Instruments GPIB board for the ISA bus equipped with the TNT4882C ASIC. |
| AT-GPIB | AT-GPIB refers to a National Instruments GPIB board for the ISA bus equipped with the NAT4882 and Turbo488 ASICs. |
| bold | Bold text denotes the names of menus, menu items, parameters, dialog boxes, dialog box buttons or options, icons, windows, Windows 95 tabs, or LEDs. |
| <i>bold italic</i> | Bold italic text denotes an activity objective, note, caution, or warning. |
| GPIB board | GPIB board refers generically to either the AT-GPIB/TNT or AT-GPIB board when information can apply to either board. |
| IEEE 488 and IEEE 488.2 | IEEE 488 and IEEE 488.2 refer to the ANSI/IEEE Standard 488.1-1987 and the ANSI/IEEE Standard 488.2-1992, respectively, which define the GPIB. |
| <i>italic</i> | Italic text denotes variables, emphasis, a cross reference, or an introduction to a key concept. This font also denotes text from which you supply the appropriate word or value, as in Windows 3.x. |
| monospace | Text in this font denotes text or characters that you should literally enter from the keyboard, sections of code, programming examples, and syntax examples. This font is also used for the proper names of disk drives, paths, directories, programs, subprograms, subroutines, device names, functions, operations, variables, filenames and extensions, and for statements and comments taken from programs. |

monospace bold Bold text in this font denotes the messages and responses that the computer automatically prints to the screen. This font also emphasizes lines of code that are different from the other examples.

monospace italic Italic text in this font denotes that you must enter the appropriate words or values in the place of these items.

Related Documentation

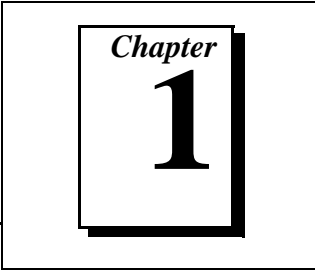
The following documents contain information that you may find helpful as you read this manual:

- ANSI/IEEE Standard 488.1-1987, *IEEE Standard Digital Interface for Programmable Instrumentation*
- ANSI/IEEE Standard 488.2-1992, *IEEE Standard Codes, Formats, Protocols, and Common Commands*
- *Microsoft Windows NT System Guide*, Microsoft Corporation

Customer Communication

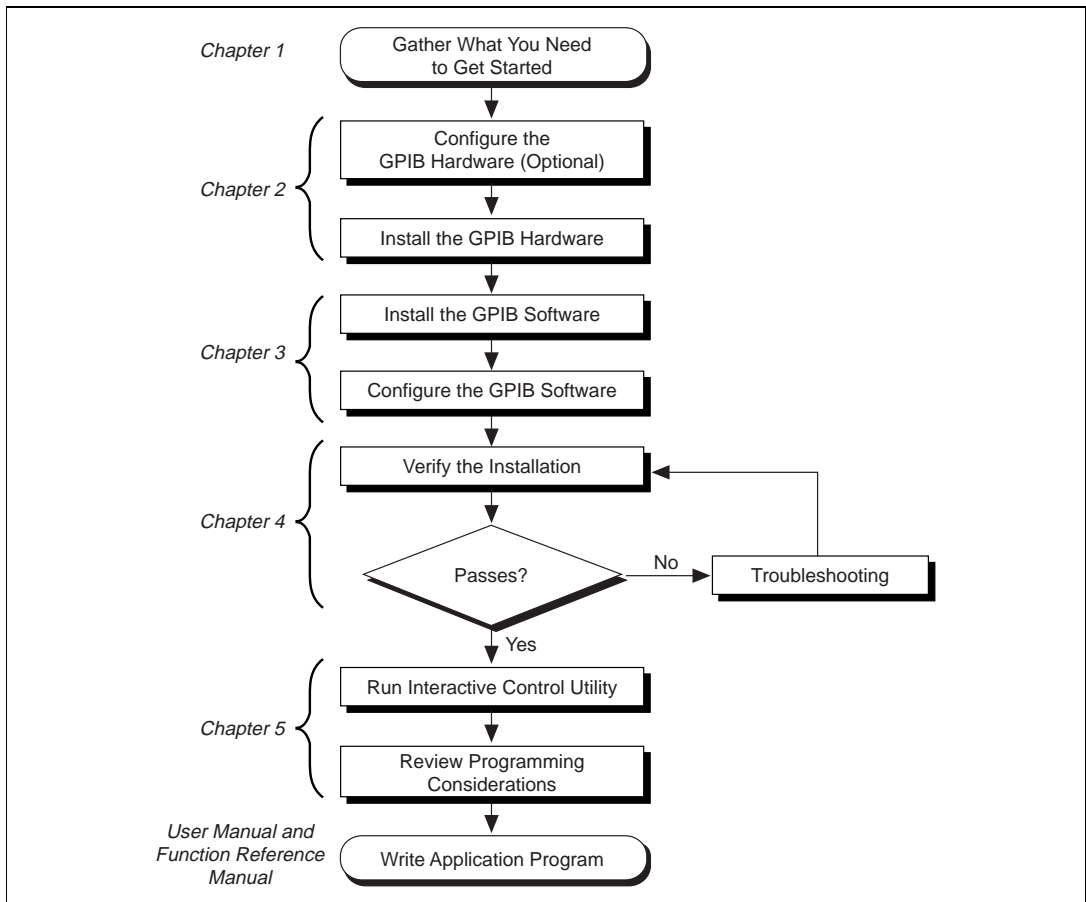
National Instruments wants to receive your comments on our products and manuals. We are interested in the applications you develop with our products, and we want to help if you have problems with them. To make it easy for you to contact us, this manual contains comment and configuration forms for you to complete. These forms are in Appendix D, [Customer Communication](#), at the end of this manual.

Introduction



This chapter explains how to use this manual, lists what you need to get started, and briefly describes the AT-GPIB/TNT and AT-GPIB boards and the GPIB software.

How to Use This Manual



What You Need to Get Started

Make sure you have all of the following items before you install your GPIB hardware and software for Windows NT:

- One of the following boards:
 - AT-GPIB/TNT
 - AT-GPIB
- The following 3.5 in., high density (1.44 MB) disks, which your kit contains:
 - GPIB Software for Windows NT (Disk 1 of 2)*
 - GPIB Software for Windows NT (Disk 2 of 2)*
- Windows NT version 4.0 or higher installed on your system

Optional Equipment

Call National Instruments for more information about the following optional equipment:

- Serial or parallel bus extender and cables
- Bus expander/isolator

GPIB Hardware Overview

The AT-GPIB/TNT board, equipped with the TNT4882C ASIC, uses the GPIB software to transform any ISA or EISA bus computer into a fully functional GPIB Talker/Listener/Controller that has complete communications and bus management capability. The TNT4882C chip combines the circuitry of the NAT4882 ASIC, the Turbo488 performance-enhancing ASIC, and GPIB transceivers to create a single-chip IEEE 488.2 Talker/Listener/Controller interface. The TNT4882C also implements the HS488 high-speed protocol, which increases the maximum data transfer rate of the AT-GPIB/TNT to 1.6 Mbytes/s. For more information about HS488, refer to Chapter 7, *GPIB Programming Techniques*, in the *GPIB User Manual for Windows 95 and Windows NT*.

The AT-GPIB board, equipped with NAT4882 and Turbo488 ASICs, also uses the GPIB software to transform any ISA or EISA bus computer into a

fully functional IEEE 488.2 Talker/Listener/Controller that has complete communications and bus management capability. The NAT4882 controller chip is fully compatible with the IEEE 488.2 standard. The Turbo488 performance-enhancing ASIC boosts GPIB read and write transfers to rates exceeding 1 Mbytes/s.

The AT-GPIB/TNT board is fully compatible with all versions of AT-GPIB hardware. You can use standard GPIB cables to connect the AT-GPIB/TNT with up to 14 instruments. You can connect the AT-GPIB board with up to 13 instruments. If you want to use more than the maximum number of instruments, you can order a bus extender or expander from National Instruments. Refer to Appendix C, *Specifications*, for more information about the hardware specifications and recommended operating conditions.

GPIB Software Overview

The GPIB software for Windows NT includes a loadable Windows NT kernel device driver and supporting utilities.

The GPIB software includes the following components:

- Device driver
- Diagnostic test utility
- Configuration utility
- Interactive control program
- Utilities for software development and debugging
- Language interface libraries for Microsoft Visual C/C++ 2.0 or later, Borland C/C++ 4.0 or later, and Microsoft Visual Basic 4.0 or later
- Virtual device driver and special DOS and Windows 3 drivers for running existing NI-488.2 for DOS and Windows 3 applications under Windows NT
- Example programs that use NI-488 functions and NI-488.2 routines

For a detailed list of files, refer to Chapter 1, *Introduction*, in the *GPIB User Manual for Windows 95 and Windows NT*. Refer to Appendix C, *Specifications*, for information about the GPIB software transfer rates.

Time-Saving Development Tools

Your kit includes the GPIB software for Windows NT. In addition, you can order the LabWindows/CVI or LabVIEW software from National Instruments to speed your application development time and make it easier to communicate with your instruments.

LabVIEW is an easy-to-use, graphical programming environment you can use to acquire data from thousands of different instruments, including IEEE 488.2 devices, VXI devices, serial devices, PLCs, and plug-in data acquisition boards. After you have acquired raw data, you can convert it into meaningful results using the powerful data analysis routines in LabVIEW. LabVIEW also comes with hundreds of instrument drivers, which dramatically reduce software development time, because you do not have to spend time programming the low-level control of each instrument.

LabWindows/CVI is similar to LabVIEW, except that it combines an interactive, easy-to-use development approach with the programming power and flexibility of compiled ANSI C code.

For ordering information, or to request free demonstration software, contact National Instruments.

Hardware Configuration and Installation

Chapter

2

This chapter describes how to configure and install your AT-GPIB/TNT or AT-GPIB board.



Caution *Electrostatic discharge can damage several components on your AT-GPIB/TNT or AT-GPIB board. To avoid electrostatic damage when you handle the board, touch the antistatic plastic package to a metal part of your system chassis before you remove the board from the package.*

Using the Hardware Default Settings

The GPIB board default settings are suitable for most computer systems. However, if the default settings conflict with another device in your system, or if you need to install more than one GPIB board, you must reconfigure the hardware.

Table 2-1 shows the default settings for the switches and jumpers on the GPIB board.

Table 2-1. Hardware Default Settings

| GPIB Board Setting | Default |
|------------------------|---------|
| Base I/O address (hex) | 2C0 |
| DMA channel | 5 |
| Interrupt line (IRQ) | 11 |

To modify the default settings of the GPIB board, proceed to the [Configure the Hardware \(Optional\)](#) section of this chapter. If you do not need to reconfigure the board, proceed to the [Install the Hardware](#) section.

Note to EISA Users

If you have an EISA bus-based computer, you should use the EISA configuration files included on your GPIB distribution disk(s) to configure your GPIB board. The !NICC304.CFG file is the configuration file for the AT-GPIB/TNT and the !NICC005.CFG file is the configuration file for the AT-GPIB. Both files are located on the first distribution disk. Follow the instructions that came with your system to copy the appropriate EISA configuration file to your EISA configuration disk. Then, run your EISA configuration program, which uses the information in the configuration file, to help you select appropriate settings for the GPIB hardware. After the program determines the settings, you must manually set the DIP switches and jumpers on the GPIB hardware to match the selections.

The DIP switches on the GPIB board use negative logic; the OFF position of a switch represents a logic one and the ON position represents a logic zero. As a result, some of the screens in your EISA configuration program might show a pattern of ones and zeros which is exactly opposite of the correct way to set your switch. To be sure you are setting the switch correctly, set it according to the ON and OFF pattern instead of the graphic representation of ones and zeros.

To modify the default settings of the GPIB board, proceed to the [Configure the Hardware \(Optional\)](#) section of this chapter. If you do not need to reconfigure the board, proceed to the [Install the Hardware](#) section.

Install the Hardware

Complete the following steps to install your AT-GPIB/TNT or AT-GPIB:

1. Turn off your system. Keep the system plugged in so that it remains grounded while you install the AT-GPIB/TNT or AT-GPIB.
2. Remove the top cover (or other access panels) to give yourself access to the computer expansion slots.
3. Find an unused expansion slot in your computer. The AT-GPIB/TNT and AT-GPIB boards require a 16-bit ISA expansion slot.
4. Remove the corresponding slot cover on the back panel of the computer.

5. Insert the GPIB board into the slot with the GPIB connector sticking out of the opening on the back panel, as shown in Figure 2-1. It might be a tight fit, but do not force the board into place.

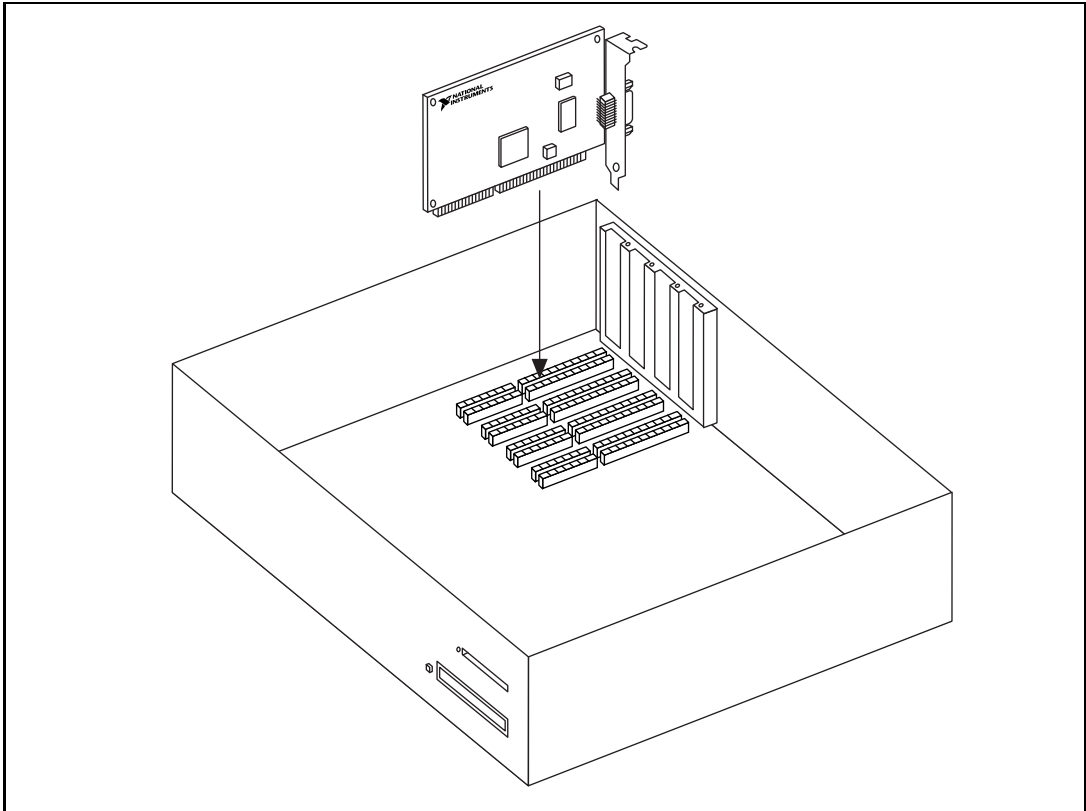


Figure 2-1. Installing the GPIB Board

6. Screw the mounting bracket of the GPIB board to the back panel rail of the computer.
7. Replace the top cover (or the access panel to the expansion slot).
8. Turn on your system and start Windows NT.

The GPIB board installation is now complete. Proceed to Chapter 3, *Software Installation and Configuration*.

Configure the Hardware (Optional)

Follow the instructions in this section to change the hardware default settings of the GPIB board before you install it. The GPIB board default settings are suitable for most computer systems. However, if the default settings conflict with another device in your system, or if you need to install more than one GPIB board, you must reconfigure the hardware.

Refer to Table 2-1 for the default settings for the switches and jumpers on the GPIB board.

Refer to Figure 2-2 or Figure 2-3 to locate the switches and jumpers on your GPIB board.

Figure 2-2 shows the location of the configuration jumpers and switches on the AT-GPIB/TNT board.

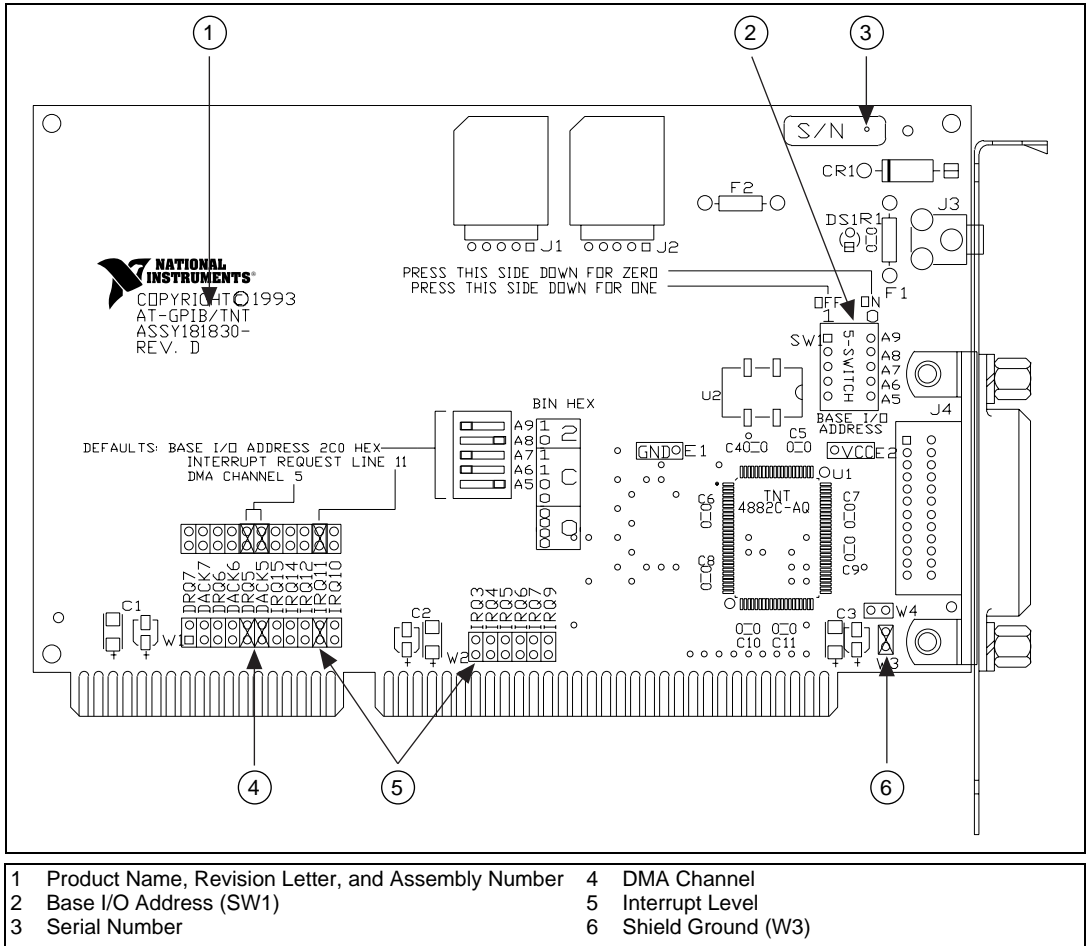


Figure 2-2. AT-GPIB/TNT Parts Locator Diagram

Figure 2-3 shows the location of the configuration jumpers and switches on the AT-GPIB board.

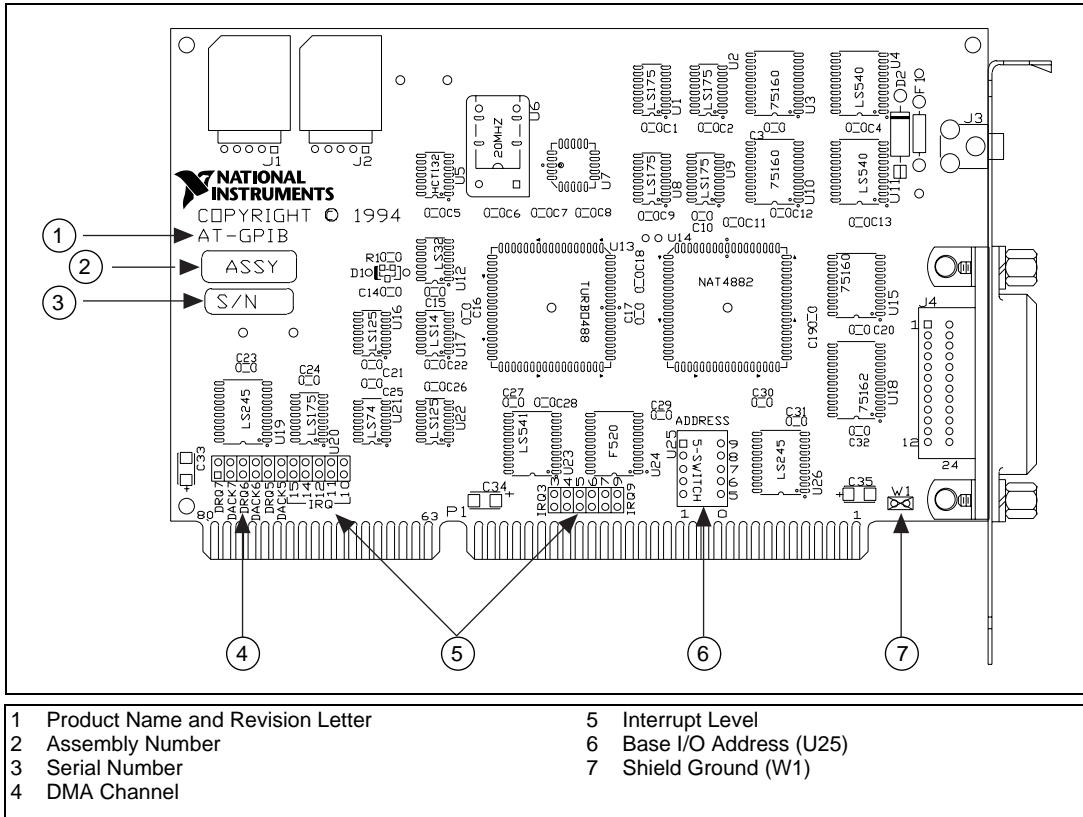


Figure 2-3. AT-GPIB Parts Locator Diagram

Selecting the Base I/O Address

Computers with an ISA or EISA bus have a segment of memory reserved for input and output. This segment is called I/O address space. The base I/O address of a plug-in board such as the GPIB board is the first position in the I/O address space occupied by the plug-in interface board.

By default, the GPIB board is configured to use base I/O address 2C0 hex. With this setting, the board uses the I/O range 2C0 hex through 2DF hex. If another device is already using this I/O range, or if you are installing more than one board, complete the following steps to reconfigure the base I/O address setting:

1. Choose a new base I/O address setting. If you are installing more than one GPIB board, each board must use a unique base I/O address.

Table 2-2 lists the possible switch settings, the corresponding base I/O addresses, and the I/O address space used for each setting. The default settings are in *bold italics*.

Table 2-2. Possible Base I/O Address Switch Settings

| Switch Setting | | | | | Base I/O Address (hex) | I/O Address Space Used (hex) |
|-----------------|-----------------|-----------------|-----------------|-----------------|------------------------|------------------------------|
| A9 | A8 | A7 | A6 | A5 | | |
| 0 | 1 | 0 | 0 | 0 | 100 | 100 to 11F |
| 0 | 1 | 0 | 0 | 1 | 120 | 120 to 13F |
| 0 | 1 | 0 | 1 | 0 | 140 | 140 to 15F |
| 0 | 1 | 0 | 1 | 1 | 160 | 160 to 17F |
| 0 | 1 | 1 | 0 | 0 | 180 | 180 to 19F |
| 0 | 1 | 1 | 0 | 1 | 1A0 | 1A0 to 1BF |
| 0 | 1 | 1 | 1 | 0 | 1C0 | 1C0 to 1DF |
| 0 | 1 | 1 | 1 | 1 | 1E0 | 1E0 to 1FF |
| 1 | 0 | 0 | 0 | 0 | 200 | 200 to 21F |
| 1 | 0 | 0 | 0 | 1 | 220 | 220 to 23F |
| 1 | 0 | 0 | 1 | 0 | 240 | 240 to 25F |
| 1 | 0 | 0 | 1 | 1 | 260 | 260 to 27F |
| 1 | 0 | 1 | 0 | 0 | 280 | 280 to 29F |
| 1 | 0 | 1 | 0 | 1 | 2A0 | 2A0 to 2BF |
| <i>1</i> | <i>0</i> | <i>1</i> | <i>1</i> | <i>0</i> | <i>2C0</i> | <i>2C0 to 2DF</i> |

Table 2-2. Possible Base I/O Address Switch Settings (Continued)

| Switch Setting | | | | | Base I/O Address (hex) | I/O Address Space Used (hex) |
|----------------|----|----|----|----|---------------------------|---------------------------------|
| A9 | A8 | A7 | A6 | A5 | | |
| 1 | 0 | 1 | 1 | 1 | 2E0 | 2E0 to 2FF |
| 1 | 1 | 0 | 0 | 0 | 300 | 300 to 31F |
| 1 | 1 | 0 | 0 | 1 | 320 | 320 to 33F |
| 1 | 1 | 0 | 1 | 0 | 340 | 340 to 35F |
| 1 | 1 | 0 | 1 | 1 | 360 | 360 to 37F |
| 1 | 1 | 1 | 0 | 0 | 380 | 380 to 39F |
| 1 | 1 | 1 | 0 | 1 | 3A0 | 3A0 to 3BF |
| 1 | 1 | 1 | 1 | 0 | 3C0 | 3C0 to 3DF |
| 1 | 1 | 1 | 1 | 1 | 3E0 | 3E0 to 3FF |

2. Locate the base I/O address switch at SW1 on your AT-GPIB/TNT board or at U25 on your AT-GPIB board. Refer to the appropriate parts locator diagram, Figure 2-2 or 2-3.
3. Change the switch settings to configure the GPIB board to the new base I/O address.

Press down on the side marked OFF to select a binary value of 1 for the corresponding address bit. Press down on the ON side of the switch to select a binary value of 0. Refer to Figure 2-4 for an example of the switch settings and corresponding base I/O addresses.

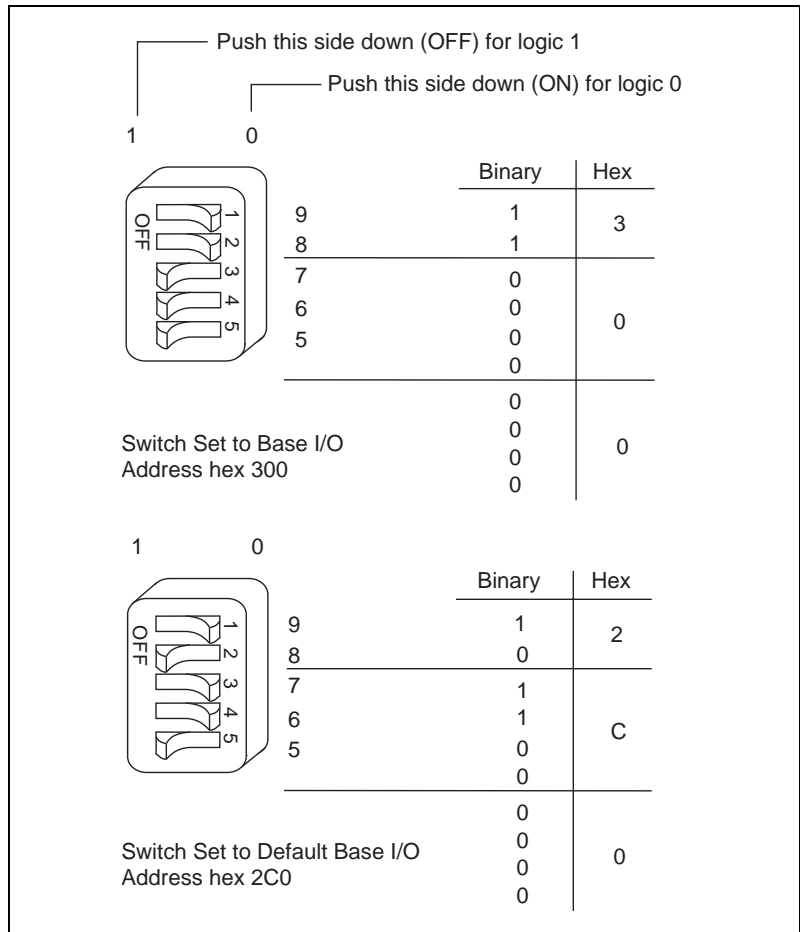


Figure 2-4. Base I/O Address Switch Settings

4. Record your new settings on the *Hardware and Software Configuration Form* in Appendix D, *Customer Communication*.
5. Remember that after you install the GPIB software, you must use the GPIB Configuration utility to configure your software settings to match your new hardware settings. Refer to the *Configure the Software* section in Chapter 3, *Software Installation and Configuration*, for information about the GPIB Configuration utility.

Selecting the Interrupt Request Line

Computers with an ISA or EISA bus have a series of interrupt request lines available to devices. Devices use interrupts to get immediate service from the CPU for asynchronous events. Your GPIB hardware and software use interrupts to get service from the CPU when necessary.



Note

Do not disable interrupts. The GPIB software for Windows NT requires interrupts to be enabled. It does not work properly with interrupts disabled.

By default, the GPIB board is configured to use interrupt request line 11. If this is not an acceptable setting or if you are installing more than one board, complete the following steps to reconfigure the interrupt request line:

1. Choose a new interrupt request line (IRQ) setting.

You can configure the GPIB board to use any of the following interrupt lines: IRQ3, 4, 5, 7, 9, 10, 11, 12, or 15. Do not use interrupt line 6 or 14. On most systems, the diskette drive controller uses interrupt line 6 and the hard disk drive controller uses interrupt line 14.

If you are installing more than one GPIB board, each board must use a unique IRQ setting.

2. Find the jumpers that set the interrupt request line. The jumpers are located on the lower edge of your GPIB board. Refer to the appropriate parts locator diagram, Figure 2-2 or 2-3.
3. Change the jumper settings to configure the GPIB board to the new interrupt request line.

To use lines 10, 11, 12, or 15, use the jumper block shown in Figure 2-5. To use interrupt lines 3, 4, 5, 7, or 9, use the jumper block shown in Figure 2-6.

Figure 2-5 shows the setting for IRQ11.

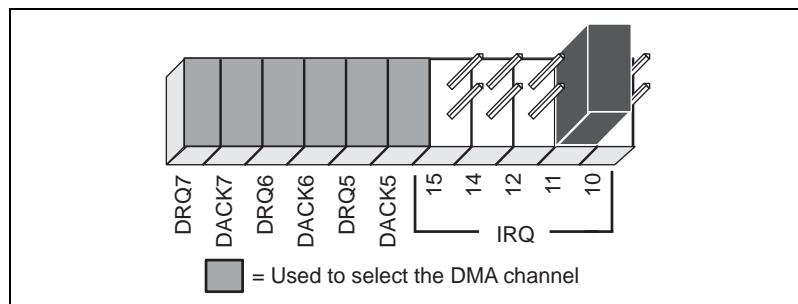


Figure 2-5. Interrupt Jumper Setting for IRQ11 (Default Setting)

Figure 2-6 shows the setting for IRQ5.

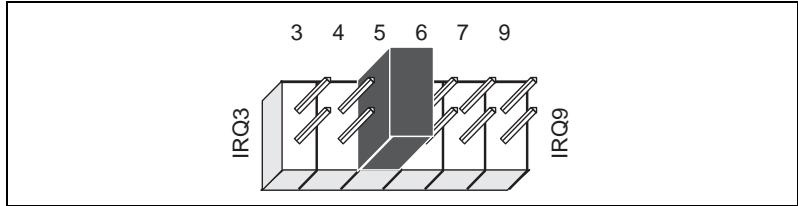


Figure 2-6. Interrupt Jumper Setting for IRQ5

4. Record your new settings on the *Hardware and Software Configuration Form* in Appendix D, *Customer Communication*.
5. Remember that after you install the GPIB software, you must use the GPIB Configuration utility to configure your software settings to match your new hardware settings. Refer to the *Configure the Software* section in Chapter 3, *Software Installation and Configuration*, for information about the GPIB Configuration utility.

Selecting the DMA Channel

Direct memory access (DMA) refers to data transfers directly to or directly from devices such as the GPIB board and system memory. Your GPIB hardware and software are designed to perform DMA. In most cases, data transfers using DMA are significantly faster than programmed I/O transfers, which use more CPU time.

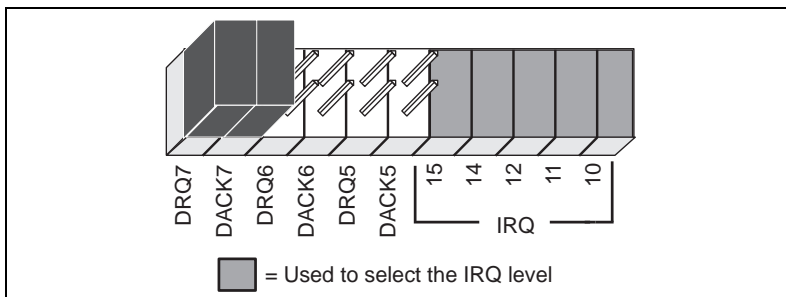
By default, the GPIB board is configured to use DMA channel 5. If this is not an acceptable setting or if you are installing more than one board, complete the following steps to reconfigure the DMA channel:

1. Choose a new DMA channel setting.
You can use channel 5, 6, or 7. If you are installing more than one GPIB board, each board must either use a unique DMA channel or must not use DMA at all.
2. Locate the jumpers that select the DMA channel. Refer to the appropriate parts locator diagram, Figure 2-2 or 2-3.
3. Change the jumper settings to configure the GPIB board to the new DMA channel. To select a new DMA channel, you must set both the DMA Acknowledge and DMA Request lines, as shown in Table 2-3.

Table 2-3. DMA Channels

| DMA Channel | Signal Lines | |
|-------------|-----------------|-------------|
| | DMA Acknowledge | DMA Request |
| 5 | DACK5 | DRQ5 |
| 6 | DACK6 | DRQ6 |
| 7 | DACK7 | DRQ7 |

Figure 2-7 shows the jumper position for selecting DMA channel 7.

**Figure 2-7.** DMA Channel Jumper Setting for DMA Channel 7

4. Record your new settings on the [Hardware and Software Configuration Form](#) in Appendix D, [Customer Communication](#).
5. Remember that after you install the GPIB software, you must use the GPIB Configuration utility to configure your software settings to match your new hardware settings. Refer to the [Configure the Software](#) section in Chapter 3, [Software Installation and Configuration](#), for information about the GPIB Configuration utility.

Using Programmed I/O for GPIB Transfers

As an alternative to DMA transfers, you can use programmed I/O. To use programmed I/O, disable DMA for the GPIB board by moving the jumpers as shown in Figure 2-8.

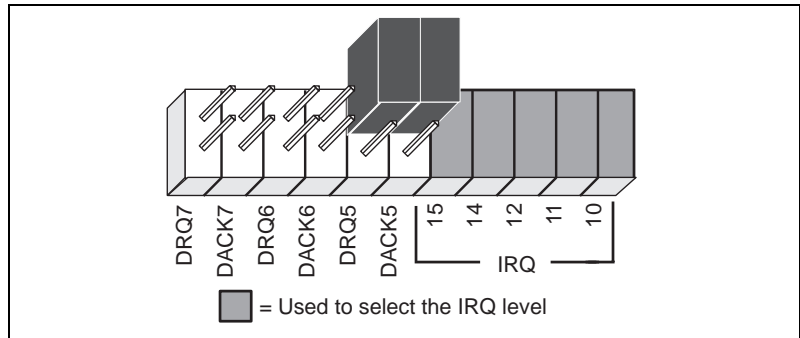


Figure 2-8. DMA Jumper Setting for No DMA Channel

Setting the Shield Ground Configuration

The GPIB board is set at the factory with the jumper in place to connect the logic ground of the GPIB board to its shield ground. This configuration minimizes EMI emissions.



Caution *The GPIB board was tested for compliance with FCC standards with the shield ground connected to logic ground. Removing the jumper might cause EMI emissions to exceed any or all of the applicable standards.*

If your application requires that logic ground be disconnected from shield ground, complete the following steps:

1. Refer to Figure 2-2 to locate the shield ground jumper W3 on the AT-GPIB/TNT board. If you are using the AT-GPIB board, refer to Figure 2-3 to locate the shield ground jumper W1.

2. Remove the jumper and place it across only one of the jumper pins, as shown in Figure 2-9.

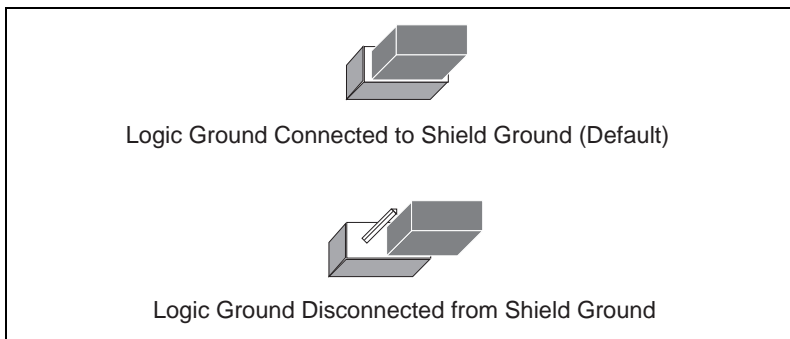
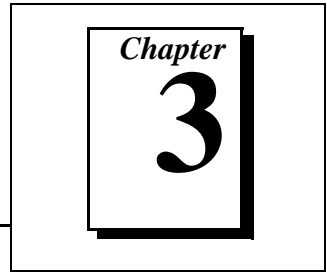


Figure 2-9. Ground Configuration Jumper Settings

3. Record the jumper setting on the *Hardware and Software Configuration Form* in Appendix D, *Customer Communication*.

Now that you have properly configured the hardware, return to the *Install the Hardware* section at the beginning of this chapter for installation instructions.

Software Installation and Configuration



This chapter describes how to install and configure the GPIB software for Windows NT.

Install the Software

After you have installed and configured the hardware, you are ready to install the GPIB software. Complete the following steps to install the GPIB software for Windows NT:

1. Log onto your Windows NT system using the Administrator account. The GPIB setup program must have Administrator privileges because the program modifies the configuration registry of your system.
2. Insert the *GPIB Software for Windows NT (Disk 1 of 2)* into an unused drive.
3. Select **Run...** from the **Start** menu.
4. Type the following command in the dialog box:

```
x:\setup
```

where *x* is the letter of the drive containing the distribution disk (usually a or b).

The software installation begins with the dialog box shown in Figure 3-1.

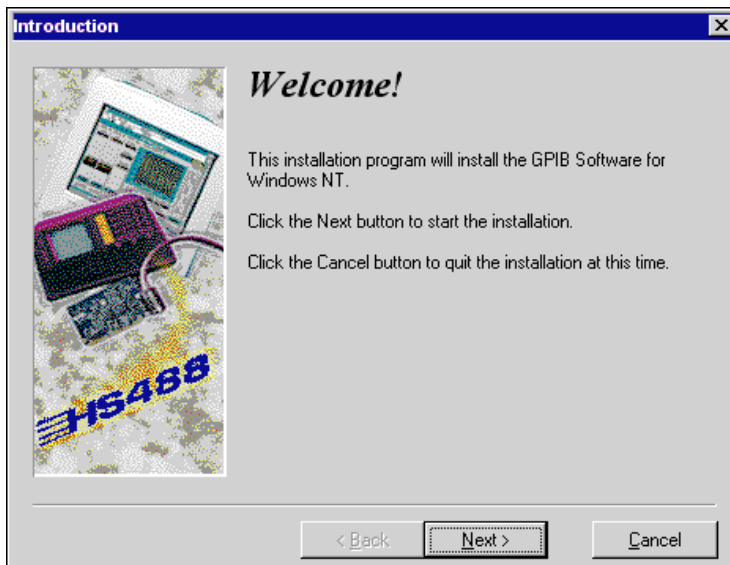


Figure 3-1. GPIB Software for Windows NT Setup Dialog Box

The setup wizard guides you through the necessary steps to install the GPIB software. To go back and change values where appropriate, click on the **Back** button. To exit the setup program at any time, click on the **Cancel** button.

Before you use the GPIB software, you must reconfigure the software. Refer to the next section, *Configure the Software*, for instructions on running the GPIB Configuration utility.

Configure the Software

The GPIB Configuration utility is an interactive utility you can use to examine or modify the configuration of the GPIB driver. You must run the GPIB Configuration utility before you can use the GPIB software for Windows NT. Complete the following steps to run the utility:

1. Select **Start>Settings>Control Panel** and double-click on the **GPIB** icon.

The GPIB Configuration utility displays a list of all the GPIB boards and device names.

2. In the **GPIB Configuration** dialog box, select a GPIB interface from the **GPIB Board** list. If you are using only one GPIB interface, select **GPIB0**.
3. Click on the **Board Type** button. Select **AT-GPIB/TNT** from the list that appears. Click on the **OK** button.
4. Configure your AT-GPIB/TNT interface:
 - a. Click on the **Configure** button to bring up the **AT-GPIB/TNT Configuration** dialog box, as shown in Figure 3-2.

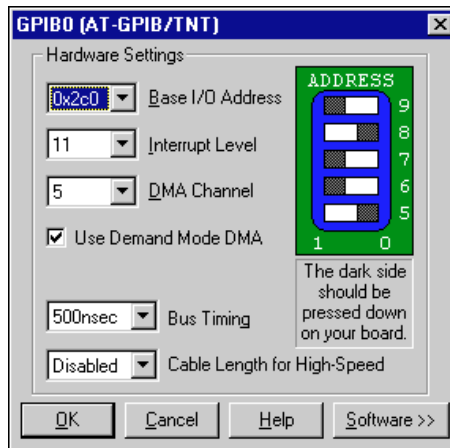


Figure 3-2. AT-GPIB/TNT Configuration Dialog Box

- b. If you are not using the default GPIB hardware settings, you must modify the **Base I/O Address**, **Interrupt Level**, and **DMA Channel** to match your AT-GPIB/TNT hardware settings.
 - c. Click on the **OK** button.
 - d. In the **GPIB Configuration** dialog box, click on the **OK** button to save your changes and exit the utility.
 - e. In the **Restart the GPIB Software?** dialog box, click on the **Yes** button.
5. (Optional) Configure the GPIB software settings:
 - a. Select **Start»Settings»Control Panel** and double-click on the **GPIB** icon.
 - b. You can configure additional items, such as the GPIB primary address or I/O timeout, but they are normally configured at run time by your application program. To examine or edit a setting, double-click on its name. You can use the online help if you have

any questions. For more information about GPIB Configuration utility options, refer to the *GPIB User Manual for Windows 95 and Windows NT* or use the online help.

- c. To save your changes and exit the utility, click on the **OK** button. To discard the changes and exit the utility, click on the **Cancel** button.

After you install and configure the software, you should verify the installation. Continue to the next chapter, Chapter 4, [Verify the Installation](#).

Verify the Installation

Chapter

4

This chapter describes how to verify the hardware and software installation.

You can use the Diagnostic utility, installed with your GPIB software, to test the hardware and software installation. The Diagnostic utility verifies that your hardware and software are functioning properly and that the configuration of your GPIB interfaces does not conflict with anything else in your system.

To run the Diagnostic utility, select the **Diagnostic** item under **Start»Programs»GPIB Software**.

After you start the Diagnostic utility, test your GPIB interfaces by clicking on the **Test All** button. If the Diagnostic utility test is successful, it puts a checkmark next to the interface and changes its status from **untested** to **passed**. If the Diagnostic utility test fails, it puts an X next to the interface, and changes its status from **untested** to **failed**. Figure 4-1 shows the **Diagnostic** dialog box after it has tested some GPIB interfaces.

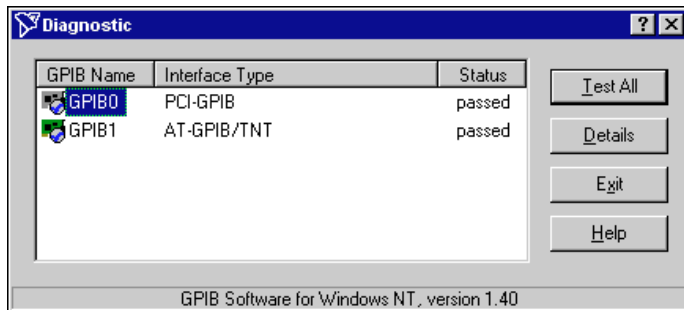
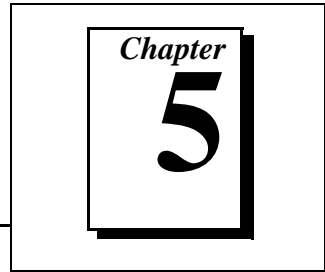


Figure 4-1. Diagnostic Utility after Testing

To get details on any of the tested GPIB interfaces, select the interface and click on the **Details** button. For each failed GPIB interface, select it and click on the **Details** button to get a description of the failure. Use that information and the information in Appendix B, *Troubleshooting and Common Questions*, to troubleshoot the problem. Troubleshooting information is also available in the Diagnostic utility online help, which you can access by clicking on the **Help** button.

Begin to Use the GPIB Software



This chapter helps you get started with the GPIB software for Windows NT.

Getting Started with LabVIEW

LabVIEW is a graphical programming language in which your source code looks like a flowchart. It provides the same functionality as other programming languages when controlling GPIB instruments. If you already installed LabVIEW, you can use the LabVIEW GPIB functions without any additional installation. To learn about the basic concepts of GPIB communication, refer to the LabVIEW GPIB functions chapter in the *LabVIEW User Manual*. To learn more about each GPIB function, refer to the *LabVIEW Function and VI Overview Manual* and the online help.

National Instruments provides LabVIEW instrument drivers, which are applications that communicate to a specific GPIB instrument. LabVIEW instrument drivers eliminate the need to learn the complex, low-level programming commands for each instrument. For more information, refer to Chapter 7, *Getting Started with a LabVIEW Instrument Driver*, in the *LabVIEW User Manual*. If you want to write your own instrument driver, National Instruments provides application notes that help you get started.

To find GPIB examples similar to your application, click on the **Solution Wizard** and **Search Examples** buttons in the startup LabVIEW dialog box.

For more information about NI products, refer to our web site at <http://www.natinst.com/products/>.

Getting Started with LabWindows/CVI

If you already installed LabWindows/CVI, you can use the LabWindows/CVI GPIB Library without any additional installation. The LabWindows/CVI GPIB Library includes the functions documented in your NI-488.2 or NI-488.2M reference manual, as well as several additional functions, which are documented in the GPIB library chapter of

the *LabWindows/CVI Standard Libraries Reference Manual*. To help you use the GPIB functions, LabWindows/CVI provides function panels for the GPIB Library. To access the function panels, select **GPIB/GPIB 488.2** from the **Library** menu of the **Project** or **Source** windows. For information about using function panels, refer to the function panels chapter in the *LabWindows/CVI User Manual*.

If you need to program a GPIB instrument, you might want to use an instrument driver. An instrument driver is a set of high-level C functions for controlling a specific instrument. The low-level steps to control the instrument and read data are encapsulated in the high-level functions. You can write an instrument driver yourself, or you can use one that is already written. When you purchase LabWindows/CVI, you get free access to a library of drivers for hundreds of instruments. For more information about instrument drivers, refer to the project window chapter in the *LabWindows/CVI User Manual*.

For more information about NI products, please refer to our web site at <http://www.natinst.com/products/>.

Introduction to the Win32 Interactive Control Utility

You can use the interactive control utility to enter NI-488 functions and NI-488.2 routines interactively and see the values returned by the function calls. You can use this utility to do the following:

- Verify GPIB communication with your device quickly and easily.
- Learn the NI-488 functions and NI-488.2 routines before you write your application.
- Become familiar with the commands of your device.
- Receive data from your GPIB device.
- Troubleshoot problems with your application.

To run the Win32 Interactive Control utility, select the **Win32 Interactive Control** item under **Start»Programs»GPIB Software**.

This utility includes extensive online help, which you can access by entering `help` at the `:` prompt. For more information about the Win32 Interactive Control utility, refer to the *GPIB User Manual for Windows 95 and Windows NT*.

Introduction to the NI Spy Utility

Included with the GPIB software is NI Spy, a Win32 utility that monitors and records multiple National Instruments APIs (for example, NI-488.2 and VISA). You can use NI Spy to monitor Win32, Win16, and DOS GPIB applications. Use NI Spy to do the following:

- Capture information about NI-488 functions and NI-488.2 routines as your GPIB applications invoke them.
- Display captured information, including, but not limited to, input and output parameter values, I/O buffer contents, and return values.
- Save, restore, and print captured information.

To run NI Spy, select the **NI Spy** item under **Start»Programs»GPIB Software**.

For more information about the NI Spy utility, refer to Chapter 5, *NI Spy Utility*, in the *GPIB User Manual for Windows 95 and Windows NT*, or use its built-in, context-sensitive online help.

Running Existing GPIB Applications

You can run existing Win32, Win16, and DOS GPIB applications under Windows NT.

Win32 and Win16 GPIB applications run without any special modifications. To run an existing DOS GPIB application, complete the following steps.

Load the special GPIB device driver `gpib-nt.com` instead of `gpib.com`, which you normally use with DOS. When you install the GPIB software, the GPIB setup program copies `gpib-nt.com` into a new subdirectory called `doswin16`. To use `gpib-nt.com`, you must modify your `config.nt` file to load `gpib-nt.com` whenever a DOS application runs. The `config.nt` file is located in your `winnt\system32` directory, where `winnt` is your Windows NT directory, for example, `c:\windows`. The GPIB setup program modifies the `config.nt` file by adding the following lines:

```
REM *** To run DOS GPIB applications, uncomment the
REM *** following line
REM device=path\doswin16\gpib-nt.com
```

where *path* is the directory in which you installed the GPIB software.

To load `gpib-nt.com`, locate these lines in your `config.nt` file and delete `REM` from the third line, as follows:

```
REM *** To run DOS GPIB applications, uncomment the
REM *** following line
device=path\doswin16\gpib-nt.com
```

where *path* is the directory in which you installed the GPIB software.

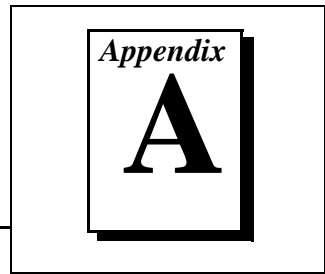
General Programming Considerations

As you begin developing your Win32 GPIB application, remember the following points:

- For your C/C++ application, you must include the NI-488.2M header file, `decl-32.h`, in your source code.
- You can access the GPIB software through the 32-bit DLL, `gpib-32.dll`, either by linking with one of the language interfaces provided with the GPIB software, or by using direct DLL entry from other programming environments.
- Several sample GPIB applications are included with the GPIB software. Use these as a guide for your own application development.

For information about choosing a programming method, developing your application, or compiling and linking, refer to the *GPIB User Manual for Windows 95 and Windows NT*. For detailed information about each NI-488 function and NI-488.2 routine, refer to the *NI-488.2M Function Reference Manual for Win32* or the online help.

Uninstalling the Hardware and Software



This appendix describes how to uninstall your AT-GPIB/TNT and the GPIB software from Windows NT.

Uninstalling the Hardware

Before you physically remove the GPIB hardware from your system, you must remove the hardware information using the GPIB Configuration utility. Complete the following steps to remove the hardware information:

1. Select **Start»Settings»Control Panel** and double-click on the **GPIB** icon.
2. In the **GPIB Configuration** dialog box, select the GPIB interface you want to remove from the **GPIB Board** list.
3. Click on the **Board Type** button and select **None** from the list that appears, as shown in Figure A-1. Click on the **OK** button to save the new **Board Type** setting.

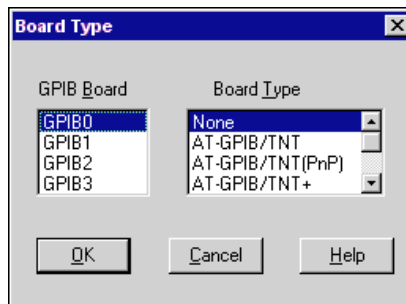


Figure A-1. Board Type Dialog Box

4. Click on the **OK** button to save your changes and exit the GPIB Configuration utility.
5. Shut down Windows NT, turn off your system, and physically remove the interface from your system.

Uninstalling the Software

Before you uninstall the GPIB software, you should set the **Board Type** for your GPIB interface(s) to **None** in the GPIB Configuration utility, as described in the previous section. Complete the following steps to uninstall the GPIB software:

1. Select **Start»Settings»Control Panel** and double-click on the **Add/Remove Programs** icon. The dialog box shown in Figure A-2 lists the software available for removal.



Figure A-2. Add/Remove Programs Properties Dialog Box

2. Select the GPIB software you want to remove and click on the **Add/Remove...** button. The uninstall program removes all folders, programs, DLLs, and registry entries associated with the GPIB software. During uninstallation, you are prompted about deleting shared components, as shown in Figure A-3. Click on **Yes**, **No**, or **No to All** to continue with the uninstallation.

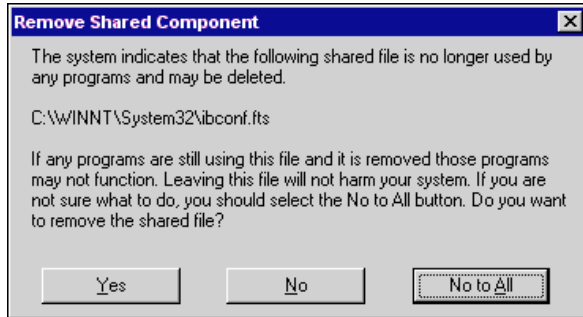


Figure A-3. Removed Shared Component Dialog Box

If you have not physically removed your hardware, shut down Windows NT, turn off your system, and remove the GPIB hardware.

The uninstall program removes only items that the GPIB setup program installed. If you add anything to a directory created by the GPIB setup program, the uninstall program does not delete that directory. You need to remove any remaining components yourself.

If you want to reinstall the GPIB hardware and software, refer to Chapter 2, *Hardware Configuration and Installation*, and Chapter 3, *Software Installation and Configuration*.

Troubleshooting and Common Questions

A graphic consisting of a large, bold, black letter 'B' centered within a white square. Above the 'B', the word 'Appendix' is written in a smaller, italicized font. The entire graphic is enclosed in a thin black border.

This appendix describes how to troubleshoot problems and answers some common questions.

Troubleshooting Diagnostic Utility Failures

The following sections explain common error messages generated by the Diagnostic utility.

Missing Software Components

This error occurs if the software components that are necessary for the GPIB software for Windows NT to function correctly are not present in the system. If you encounter this problem, reinstall the GPIB software for Windows NT and run the Diagnostic utility again.

No GPIB Interfaces Present

This error occurs if there are no GPIB interfaces physically present in the system or there is a resource conflict with the interfaces that are installed. If you encounter this problem, use the GPIB Configuration utility to examine the installed GPIB interfaces and the resources assigned to each. Then, run the Diagnostic utility again.

To access this information in the GPIB Configuration utility, complete the following steps:

1. Select **Start»Settings»Control Panel** and double-click on the **GPIB** icon.
2. Click on the **Board Type** button and verify that the type of GPIB interface listed for each logical board name is correct. Click on the **OK** button to return to the main dialog box.
3. Double-click on each board name and verify that the hardware settings displayed in the dialog box match your actual hardware settings.

GPIB Cables Need To Be Disconnected

This error occurs if you have any GPIB cables connected to the GPIB interface. Disconnect all GPIB cables and run the Diagnostic utility again.

Address Resource Conflict

This error occurs if the address resources assigned to a GPIB interface conflict with the address resources being used by other devices in the system. To resolve an address resource conflict, refer to the [Resolving Resource Conflicts](#) section, later in this appendix. After you have resolved the conflict, run the Diagnostic utility again.

Interrupt Resource Conflict

This error occurs if the interrupt resources assigned to a GPIB interface conflict with the interrupt resources being used by other devices in the system. To resolve an interrupt resource conflict, refer to the [Resolving Resource Conflicts](#) section, later in this appendix. After you have resolved the conflict, run the Diagnostic utility again.

DMA Resource Conflict

This error occurs if the DMA resources assigned to a GPIB interface conflict with the DMA resources being used by other devices in the system. To resolve a DMA resource conflict, refer to the [Resolving Resource Conflicts](#) section, later in this appendix. After you have resolved the conflict, run the Diagnostic utility again.

Single-Cycle DMA Required

This error occurs if the Diagnostic utility detects that it is unable to perform demand-mode DMA for the GPIB interface and that you have not configured the GPIB software to use single-cycle DMA. GPIB interfaces that use the system DMA controller, such as the AT-GPIB/TNT, normally use demand-mode DMA. If you encounter this error, you should use the GPIB Configuration utility to configure the GPIB software to use single-cycle DMA for all DMA transfers, and then run the Diagnostic utility again.

To configure the GPIB software to use single-cycle DMA for a particular GPIB interface, complete the following steps:

1. Select **Start»Settings»Control Panel** and double-click on the **GPIB** icon.
2. Double-click on the GPIB interface you want to configure.
3. Make sure that the **Use Demand Mode DMA** item is unchecked.

GPIB Software Problem Encountered

This error occurs if the Diagnostic utility detects that it is unable to communicate correctly with the GPIB hardware using the installed GPIB software. If you encounter this error, shut down your system, restart it, and run the Diagnostic utility again. If the problem persists, reinstall the GPIB software for Windows NT.

Unknown Problem Encountered

This error occurs if an unknown problem is encountered when you try to execute the Diagnostic utility. If this error occurs, shut down your system, restart it, and run the Diagnostic utility again. If the problem persists, reinstall the GPIB software for Windows NT.

Resolving Resource Conflicts

Resource conflicts occur when your system contains hardware that is configured to use the same resources as your GPIB interface. The GPIB driver detects some resource conflicts when it loads. When the driver detects conflicts as it loads, it records an error message describing the conflict. You can use the Event Viewer, as described in the following section, *Using Windows NT Diagnostic Tools*, to see which resource is in conflict.

Once you have identified the resource that caused the conflict, use the GPIB Configuration utility to reconfigure your GPIB interface so that it uses conflict-free resources. To help in the selection of conflict-free resources, Microsoft has provided a utility called Windows NT Diagnostics. This utility displays a list of the I/O port addresses, interrupt levels, and DMA channels that your system is currently using. You can assign resources not listed by this utility to your GPIB interface.

To run the Windows NT Diagnostics utility, select **Start»Programs»Administrative Tools»Windows NT Diagnostics**.

Using Windows NT Diagnostic Tools

There are many reasons why the GPIB driver might not load. If the software is not properly installed or if there is a conflict between the GPIB hardware and the other hardware in the system, the GPIB driver fails to start. Two Windows NT utilities are useful in determining the source of the problem: the Devices applet in the Control Panel, and the Event Viewer. The following sections describe the information available through each utility.

Examining NT Devices To Verify the GPIB Installation

To verify whether the GPIB devices are installed correctly (that is, that the devices are started), select **Start»Settings»Control Panel** and double-click on the **Devices** icon.

This utility lists all of the devices detected by Windows NT. Each device has a status associated with it. If the GPIB driver is installed correctly, the following lines appear in the list of Windows NT devices:

| <u>Device</u> | <u>Status</u> | <u>Started</u> |
|--------------------------|---------------|----------------|
| GPIB Board Class Driver | Started | Automatic |
| GPIB Device Class Driver | Started | Automatic |

You should also see one or more lines similar to the following:

| <u>Device</u> | <u>Status</u> | <u>Started</u> |
|-----------------------------|---------------|----------------|
| GPIB Port Driver (AT-GPIB) | **** | System |
| GPIB Port Driver (PCI-GPIB) | **** | System |

The GPIB Board Class Driver, the GPIB Device Class Driver, and at least one of the GPIB Port Drivers listed by the Devices applet should have a status of **started**. If not, refer to the next section, [Examining the NT System Log Using the Event Viewer](#).

If the GPIB Class Driver lines are not present or at least one GPIB Port Driver line is not present, the GPIB software is not installed properly. You should reinstall the GPIB software. Refer to Chapter 3, [Software Installation and Configuration](#), for installation instructions.

Examining the NT System Log Using the Event Viewer

Windows NT maintains a system log. If the GPIB driver is unable to start, it records entries in the system log explaining why it failed to start. To examine the system log by running the Event Viewer utility, select **Start»Programs»Administrative Tools»Event Viewer**.

Events that might appear in the system log include the following:

- The system cannot locate the device file for one or more of the devices that make up the GPIB driver and an event is logged that **The system cannot find the file specified**. In this case, the GPIB software is not installed properly. You should reinstall the GPIB software. Refer to Chapter 3, *Software Installation and Configuration*, for installation instructions.
- A conflict exists between the GPIB hardware and the other hardware in the system. If this is the case, an event is logged that indicates the nature of the resource conflict. To correct this conflict, reconfigure the GPIB hardware and the GPIB software. Refer to Chapter 2, *Hardware Configuration and Installation*, and Chapter 3, *Software Installation and Configuration*, for configuration information.

Common Questions

How can I determine which type of GPIB hardware I have installed?

Run the GPIB Configuration utility: select **Start»Settings»Control Panel** and double-click on the **GPIB** icon.

How can I determine which version of the GPIB software I have installed?

Run the Diagnostic utility: select the **Diagnostic** item under **Start»Programs»GPIB Software**. The Diagnostic utility displays the version of the GPIB software that is installed in a banner at the bottom of the window that appears.

Which GPIB interfaces does version 1.4 of the GPIB software for Windows NT support?

Version 1.4 of the GPIB software for Windows NT supports the AT-GPIB, AT-GPIB/TNT, AT-GPIB/TNT+, AT-GPIB/TNT (PnP), PC/104-GPIB, PCI-GPIB, PCI-GPIB+, PCMCIA-GPIB, PMC-GPIB, and PXI-GPIB.

How many GPIB interfaces can I configure for use with my GPIB software for Windows NT?

You can configure the GPIB software for Windows NT to communicate with up to four GPIB interfaces.

How many devices can I configure for use with my GPIB software for Windows NT?

The GPIB software for Windows NT provides a total of 100 logical devices for applications to use. The default number of devices is 32.

Are interrupts and DMA required with the GPIB software for Windows NT?

Interrupts are required, but DMA is not.

How can I determine if my GPIB hardware and software are installed properly?

Run the Diagnostic utility: select the **Diagnostic** item under **Start»Programs»GPIB Software**. Refer to the [Troubleshooting Diagnostic Utility Failures](#) section earlier in this appendix or the online help to troubleshoot any problems.

When should I use the Win32 Interactive Control utility?

You can use the Win32 Interactive Control utility to test and verify instrument communication, troubleshoot problems, and develop your application. For more information, refer to the [Introduction to the Win32 Interactive Control Utility](#) section in Chapter 5, *Begin to Use the GPIB Software*.

How do I use an NI-488.2M language interface?

For information about using NI-488.2M language interfaces, refer to Chapter 3, *Developing Your Application*, in the *GPIB User Manual for Windows 95 and Windows NT*.

What do I do if the Diagnostic utility fails with an error?

Use the Diagnostic utility online help, or refer to the [Troubleshooting Diagnostic Utility Failures](#) section earlier in this appendix. If you have already completed the troubleshooting steps, fill out the forms in Appendix D, [Customer Communication](#), and contact National Instruments.

How do I communicate with my instrument over the GPIB?

Refer to the documentation that came from the instrument manufacturer. The command sequences you use are totally dependent on the specific instrument. The documentation for each instrument should include the GPIB commands you need to communicate with it. In most cases, NI-488

device-level calls are sufficient for communicating with instruments. Refer to Chapter 3, *Developing Your Application*, in the *GPIB User Manual for Windows 95 and Windows NT*, for more information.

Can I use the NI-488 and NI-488.2 calls together in the same application?

Yes, you can mix NI-488 functions and NI-488.2 routines.

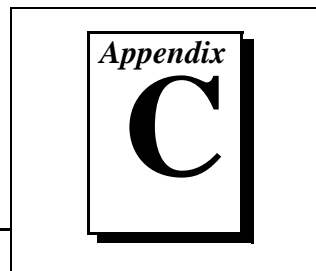
What can I do to check for errors in my GPIB application?

Examine the value of `ibsta` after each NI-488 or NI-488.2 call. If a call fails, the ERR bit of `ibsta` is set and an error code is stored in `iberr`. For more information about global status variables, refer to Chapter 3, *Developing Your Application*, in the *GPIB User Manual for Windows 95 and Windows NT*.

What information should I have before I call National Instruments?

When you call National Instruments, you should have the results of the Diagnostic utility test. Also, make sure you have filled out the forms in Appendix D, *Customer Communication*.

Specifications



This appendix describes the electrical, physical, and environmental characteristics of the AT-GPIB/TNT and AT-GPIB and the recommended operating conditions.

Hardware Characteristics

Table C-1. Hardware Characteristics for the AT-GPIB/TNT

| Characteristic | Specification |
|--|--|
| Dimensions | 10.67 by 16.51 cm (4.2 by 6.5 in.) |
| Power Requirement (from PC AT I/O channel) | +5 VDC 50 mA Typical 120 mA Maximum |
| I/O Connector | IEEE 488 Standard 24-Pin |
| Operating Environment: Component Temperature Relative Humidity | 0° to 55° C 10% to 90%, noncondensing |
| Storage Environment: Temperature Relative Humidity | -20° to 70° C 5% to 90%, noncondensing |
| EMI | FCC Class B Certified |

Table C-2. Hardware Characteristics for the AT-GPIB

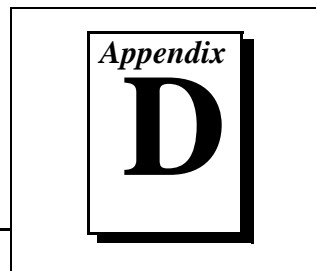
| Characteristic | Specification |
|--|---|
| Dimensions | 10.67 by 16.51 cm (4.2 by 6.5 in.) |
| Power Requirement (from PC AT I/O channel) | +5 VDC 0.66 A Typical 1.5 A Maximum |
| I/O Connector | IEEE 488 Standard 24-Pin |
| Operating Environment: Component Temperature Relative Humidity | 0° to 55° C 10% to 90%, noncondensing |
| Storage Environment: Temperature Relative Humidity | -20° to 70° C 5% to 90%, noncondensing |
| EMI | FCC Class B Certified |

Software Transfer Rates

Table C-3. GPIB Software Transfer Rates for the AT-GPIB/TNT and AT-GPIB

| GPIB Hardware | Transfer Method | Maximum GPIB Transfer Rate |
|---|------------------------|-----------------------------------|
| AT-GPIB/TNT | 3-wire (IEEE 488) | 1.4 Mbytes/s* |
| | High Speed (HS488) | 1.6 Mbytes/s* |
| AT-GPIB | 3-Wire (IEEE 488) | 1.3 Mbytes/s* |
| * Actual speed may vary considerably from speed shown due to system and instrumentation capabilities. | | |

Customer Communication



For your convenience, this appendix contains forms to help you gather the information necessary to help us solve your technical problems and a form you can use to comment on the product documentation. When you contact us, we need the information on the Technical Support Form and the configuration form, if your manual contains one, about your system configuration to answer your questions as quickly as possible.

National Instruments has technical assistance through electronic, fax, and telephone systems to quickly provide the information you need. Our electronic services include a bulletin board service, an FTP site, a fax-on-demand system, and e-mail support. If you have a hardware or software problem, first try the electronic support systems. If the information available on these systems does not answer your questions, we offer fax and telephone support through our technical support centers, which are staffed by applications engineers.

Electronic Services

Bulletin Board Support

National Instruments has BBS and FTP sites dedicated for 24-hour support with a collection of files and documents to answer most common customer questions. From these sites, you can also download the latest instrument drivers, updates, and example programs. For recorded instructions on how to use the bulletin board and FTP services and for BBS automated information, call 512 795 6990. You can access these services at:

United States: 512 794 5422

Up to 14,400 baud, 8 data bits, 1 stop bit, no parity

United Kingdom: 01635 551422

Up to 9,600 baud, 8 data bits, 1 stop bit, no parity

France: 01 48 65 15 59

Up to 9,600 baud, 8 data bits, 1 stop bit, no parity

FTP Support

To access our FTP site, log on to our Internet host, `ftp.natinst.com`, as anonymous and use your Internet address, such as `joesmith@anywhere.com`, as your password. The support files and documents are located in the `/support` directories.

Fax-on-Demand Support

Fax-on-Demand is a 24-hour information retrieval system containing a library of documents on a wide range of technical information. You can access Fax-on-Demand from a touch-tone telephone at 512 418 1111.

E-Mail Support (Currently USA Only)

You can submit technical support questions to the applications engineering team through e-mail at the Internet address listed below. Remember to include your name, address, and phone number so we can contact you with solutions and suggestions.

support@natinst.com

Telephone and Fax Support

National Instruments has branch offices all over the world. Use the list below to find the technical support number for your country. If there is no National Instruments office in your country, contact the source from which you purchased your software to obtain support.

| Country | Telephone | Fax |
|------------------|------------------|------------------|
| Australia | 03 9879 5166 | 03 9879 6277 |
| Austria | 0662 45 79 90 0 | 0662 45 79 90 19 |
| Belgium | 02 757 00 20 | 02 757 03 11 |
| Brazil | 011 288 3336 | 011 288 8528 |
| Canada (Ontario) | 905 785 0085 | 905 785 0086 |
| Canada (Quebec) | 514 694 8521 | 514 694 4399 |
| Denmark | 45 76 26 00 | 45 76 26 02 |
| Finland | 09 725 725 11 | 09 725 725 55 |
| France | 01 48 14 24 24 | 01 48 14 24 14 |
| Germany | 089 741 31 30 | 089 714 60 35 |
| Hong Kong | 2645 3186 | 2686 8505 |
| Israel | 03 6120092 | 03 6120095 |
| Italy | 02 413091 | 02 41309215 |
| Japan | 03 5472 2970 | 03 5472 2977 |
| Korea | 02 596 7456 | 02 596 7455 |
| Mexico | 5 520 2635 | 5 520 3282 |
| Netherlands | 0348 433466 | 0348 430673 |
| Norway | 32 84 84 00 | 32 84 86 00 |
| Singapore | 2265886 | 2265887 |
| Spain | 91 640 0085 | 91 640 0533 |
| Sweden | 08 730 49 70 | 08 730 43 70 |
| Switzerland | 056 200 51 51 | 056 200 51 55 |
| Taiwan | 02 377 1200 | 02 737 4644 |
| United Kingdom | 01635 523545 | 01635 523154 |
| United States | 512 795 8248 | 512 794 5678 |

Technical Support Form

Photocopy this form and update it each time you make changes to your software or hardware, and use the completed copy of this form as a reference for your current configuration. Completing this form accurately before contacting National Instruments for technical support helps our applications engineers answer your questions more efficiently.

If you are using any National Instruments hardware or software products related to this problem, include the configuration forms from their user manuals. Include additional pages if necessary.

Name _____

Company _____

Address _____

Fax (____) _____ Phone (____) _____

Computer brand _____ Model _____ Processor _____

Operating system (include version number) _____

Clock speed _____ MHz RAM _____ MB Display adapter _____

Mouse ___yes ___no Other adapters installed _____

Hard disk capacity _____ MB Brand _____

Instruments used _____

National Instruments hardware product model _____ Revision _____

Configuration _____

National Instruments software product _____ Version _____

Configuration _____

The problem is: _____

List any error messages: _____

The following steps reproduce the problem: _____

Hardware and Software Configuration Form

Record the settings and revisions of your hardware and software on the line to the right of each item. Complete a new copy of this form each time you revise your software or hardware configuration, and use this form as a reference for your current configuration. Completing this form accurately before contacting National Instruments for technical support helps our applications engineers answer your questions more efficiently.

National Instruments Products

GPIB interface type and revision _____

GPIB software for Windows NT version number on disk _____

Programming language interface version _____

Shield ground connected to logic ground (yes or no) _____

Diagnostic utility results _____

Board settings:

| | Base I/O Address | Interrupt Level | DMA Channel |
|-------|-----------------------------|----------------------------|------------------------|
| gpib0 | _____ | _____ | _____ |
| gpib1 | _____ | _____ | _____ |
| gpib2 | _____ | _____ | _____ |
| gpib3 | _____ | _____ | _____ |

Other Products

Computer make and model _____

Microprocessor _____

Clock frequency or speed _____

Type of monitor card installed _____

Windows NT version _____

Application programming language (Microsoft C, and so on) _____

Other boards in system _____

Base I/O address of other boards _____

Interrupt level of other boards _____

DMA channels of other boards _____

Documentation Comment Form

National Instruments encourages you to comment on the documentation supplied with our products. This information helps us provide quality products to meet your needs.

Title: *Getting Started with Your AT-GPIB/TNT and the GPIB Software for Windows NT*

Edition Date: January 1998

Part Number: 320648D-01

Please comment on the completeness, clarity, and organization of the manual.

If you find errors in the manual, please record the page numbers and describe the errors.

Thank you for your help.

Name _____

Title _____

Company _____

Address _____

E-Mail Address _____

Phone (____) _____ Fax (____) _____

Mail to: Technical Publications
National Instruments Corporation
6504 Bridge Point Parkway
Austin, Texas 78730-5039

Fax to: Technical Publications
National Instruments Corporation
512 794 5678

| Prefix | Meanings | Value |
|---------------|-----------------|--------------|
| m- | milli- | 10^{-3} |
| c- | centi- | 10^{-2} |
| M- | mega- | 10^6 |

| | |
|------|--|
| ° | degrees |
| % | percent |
| A | amperes |
| ANSI | American National Standards Institute |
| ASIC | application-specific integrated circuit |
| C | Celsius |
| CPU | central processing unit |
| DIP | dual inline package |
| DMA | direct memory access |
| EISA | Extended Industry Standard Architecture |
| EMI | electromagnetic interference |
| FCC | Federal Communications Commission |
| GPIB | General Purpose Interface Bus |
| hex | hexadecimal |
| Hz | hertz |
| IEEE | Institute of Electrical and Electronic Engineers |

Glossary

| | |
|--------|---|
| in. | inches |
| I/O | input/output |
| IRQ | interrupt request |
| ISA | Industry Standard Architecture |
| kernel | set of programs in an operating system that implements basic system functions |
| m | meters |
| MB | megabytes of memory |
| PC | personal computer |
| RAM | random-access memory |
| s | seconds |
| VDC | volts direct current |